

ДВЕНАДЦАТЬ ПРЕЛЮДИЙ

TWELVE PRELUDES

Аппликатура А. Сеговии

Fingering by A. Segovia

Tranquillo (Спокойно)

М. ПОНСЕ

Manuel M. PONCE

I

The musical score for the first prelude is written for guitar on a single staff in D major (two sharps). It consists of 12 measures. The tempo is marked 'Tranquillo (Спокойно)'. The score includes various musical notations such as dynamics (p, f, cresc., dim., rall.), articulation (accents), and fingering numbers (1-5, 0 for natural). Roman numerals II, V, IV, and VII are used to indicate specific fingerings or positions. The piece ends with a final chord and a fermata.

II

Vivo (Живо)

Vivo (Живо)

f

f

p

cresc.

dim.

f

ff

f

p

pp

ff

p

rit.

Arm.7 Arm.12

III

Andante (Не спеша)

[illegible]

a piacere

A musical score for a single melodic line, likely for a violin or flute, in G major (one sharp). The tempo/mood is marked 'a piacere'. The score consists of a single staff with various musical notations including eighth and sixteenth notes, rests, and fingerings. Fingerings are indicated by circled numbers 1-5. There are also circled numbers 3, 4, and 6, possibly indicating specific techniques or positions. The piece ends with a double bar line and a fermata. The word 'p' (piano) is written below the staff towards the end.

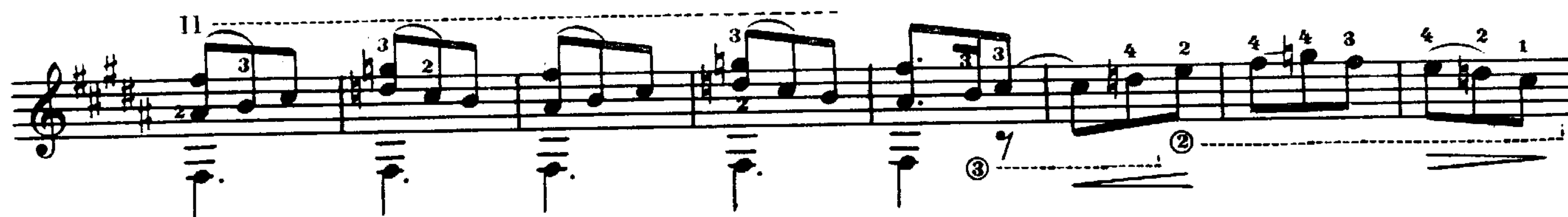
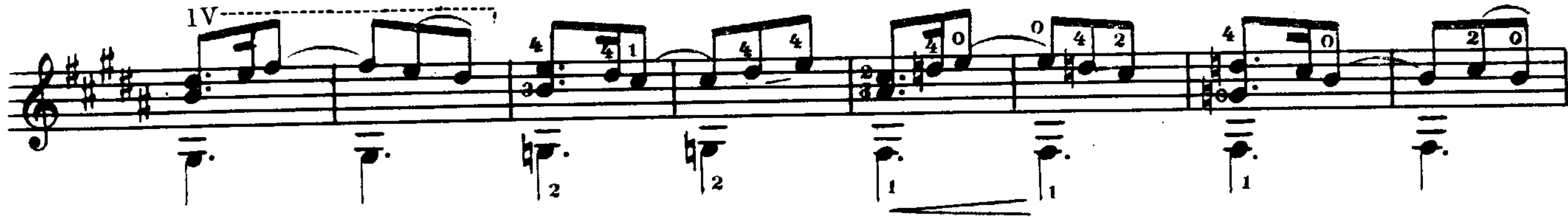
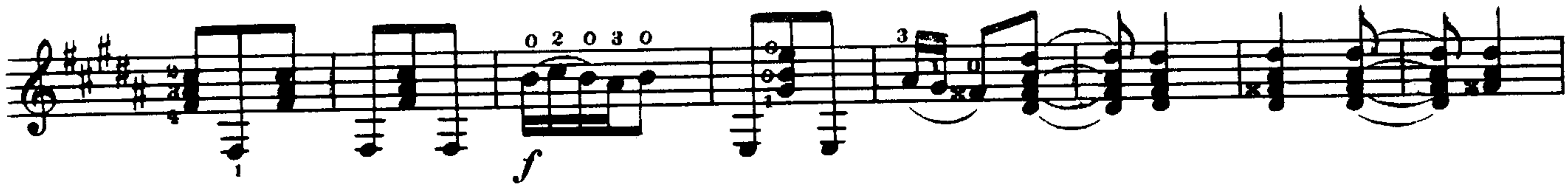
The image shows a musical score for a piano introduction and a waltz section. The score is written for piano and includes various musical notations such as notes, rests, and fingerings. The key signature is one sharp (F#), and the time signature is 3/4. The score is divided into two parts: a piano introduction and a waltz section. The piano introduction is marked with a piano (p) dynamic and a tempo of 'Allegretto'. The waltz section is marked with a waltz tempo and a key signature change to one sharp (F#). The score includes various musical notations such as notes, rests, and fingerings. The piano introduction is marked with a piano (p) dynamic and a tempo of 'Allegretto'. The waltz section is marked with a waltz tempo and a key signature change to one sharp (F#). The score includes various musical notations such as notes, rests, and fingerings.

IV

Vivo (Живо)

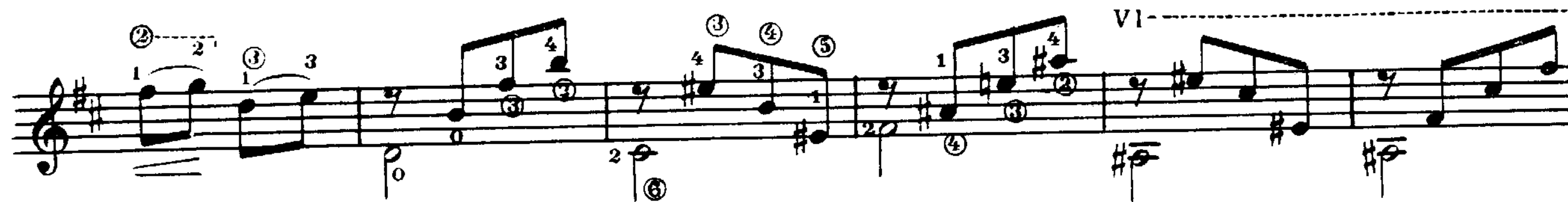
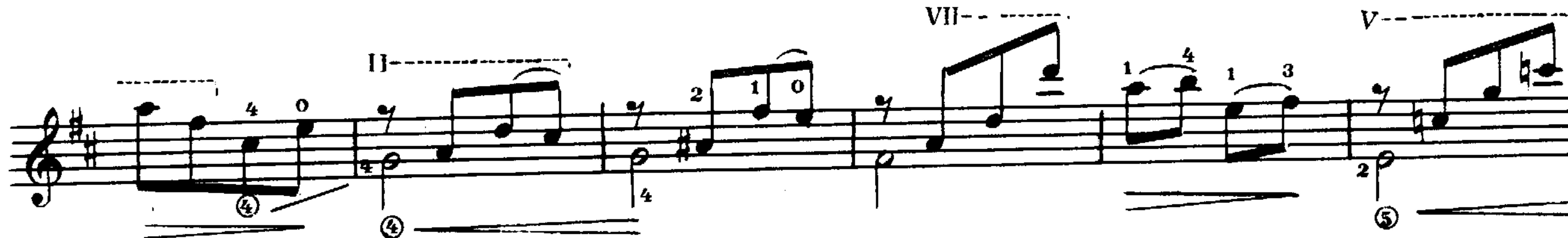
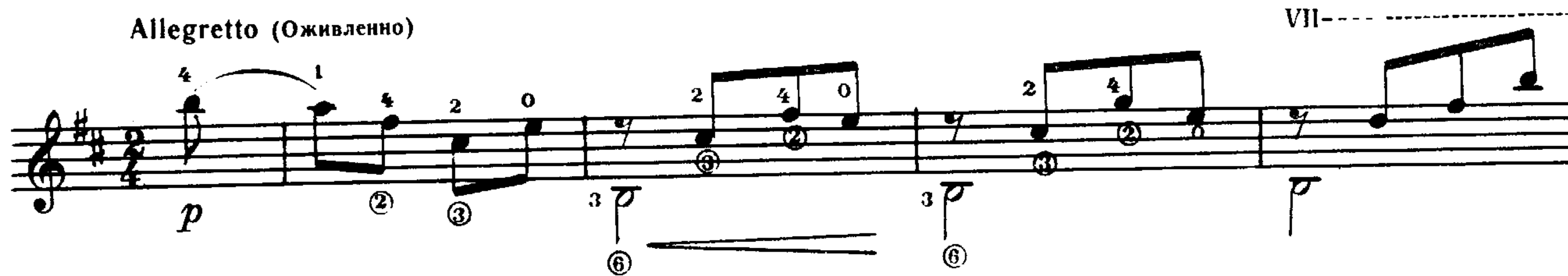
[illegible]

Musical score for "The Rose Tree" in G major (one sharp). The score is written on a single staff with a treble clef. It begins with a key signature of one sharp (F#) and a common time signature (C). The melody is composed of eighth and sixteenth notes, with some measures containing triplets. The lyrics "The Rose Tree" are written below the staff. The score includes a crescendo marking (*cresc.*) and a final measure with a double bar line.



V

Allegretto (Оживленно)



II-----

VII-----

VII-----

This system contains three staves of music. The top staff has a treble clef and a key signature of two sharps (F# and C#). It features several chords with fingerings (e.g., 2, 1, 4, 2; 3, 2, 1; 2, 4, 1; 1, 4, 2, 0; 2, 2, 2) and articulation marks like slurs and accents. The middle staff has a treble clef and a key signature of one sharp (F#). It includes chords with fingerings (e.g., 2, 4, 0; 2, 3, 2; 2, 4, 1; 2, 4, 0) and dynamic markings *p* and *f*. The bottom staff has a treble clef and a key signature of one sharp (F#). It includes chords with fingerings (e.g., 3, 2, 0; 2, 4, 2, 0; 2, 2, 2) and articulation marks like slurs and accents.

VI

Moderato espressivo (Умеренно, выразительно)

This system contains six staves of music. The top staff has a treble clef and a key signature of one sharp (F#). It includes chords with fingerings (e.g., 4, 1, 3, 0; 4, 1, 3, 0) and dynamic marking *p*. The second staff has a treble clef and a key signature of one sharp (F#). It includes chords with fingerings (e.g., 1, 4, 3, 0; 1, 4, 3, 0; 2, 4, 3, 0; 2, 4, 3, 0; 2, 4, 3, 0; 2, 4, 3, 0; 2, 4, 3, 0; 2, 4, 3, 0) and articulation marks like slurs and accents. The third staff has a treble clef and a key signature of one sharp (F#). It includes chords with fingerings (e.g., 2, 4, 3, 0; 2, 4, 3, 0; 2, 4, 3, 0; 2, 4, 3, 0; 2, 4, 3, 0; 2, 4, 3, 0; 2, 4, 3, 0; 2, 4, 3, 0) and articulation marks like slurs and accents. The fourth staff has a treble clef and a key signature of one sharp (F#). It includes chords with fingerings (e.g., 2, 4, 3, 0; 2, 4, 3, 0; 2, 4, 3, 0; 2, 4, 3, 0; 2, 4, 3, 0; 2, 4, 3, 0; 2, 4, 3, 0; 2, 4, 3, 0) and articulation marks like slurs and accents. The fifth staff has a treble clef and a key signature of one sharp (F#). It includes chords with fingerings (e.g., 2, 4, 3, 0; 2, 4, 3, 0; 2, 4, 3, 0; 2, 4, 3, 0; 2, 4, 3, 0; 2, 4, 3, 0; 2, 4, 3, 0; 2, 4, 3, 0) and articulation marks like slurs and accents. The bottom staff has a treble clef and a key signature of one sharp (F#). It includes chords with fingerings (e.g., 2, 4, 3, 0; 2, 4, 3, 0; 2, 4, 3, 0; 2, 4, 3, 0; 2, 4, 3, 0; 2, 4, 3, 0; 2, 4, 3, 0; 2, 4, 3, 0) and articulation marks like slurs and accents. The dynamic marking *pp* is at the bottom right.